

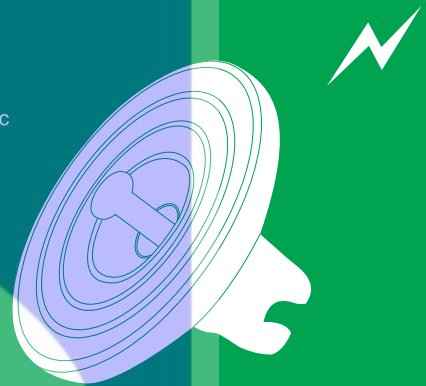
GLASS INSULATOR

Application & Key Feature

- Widely used in power station, transmission and distribution line
- Product are in comply with various kinds of standards like NEMA/IEC/AS/BS etc

Classification

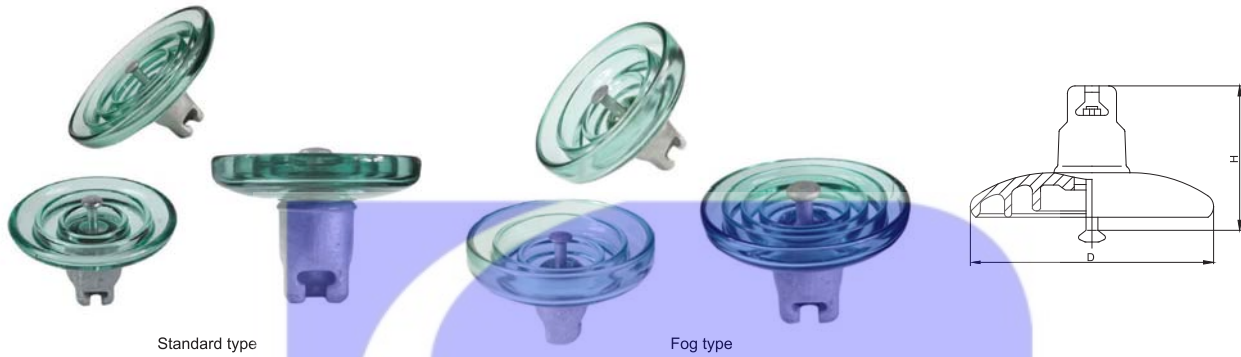
- Regular AC Disc Insulator
- Fog Type AC Disc Insulator
- Direct Current Disc Insulator
- Open Air Profile Disc Insulator
- Long Creepage Distance Disc Insulator
- Earthing Type Cap & Pin Insulator



Colmate

Electric

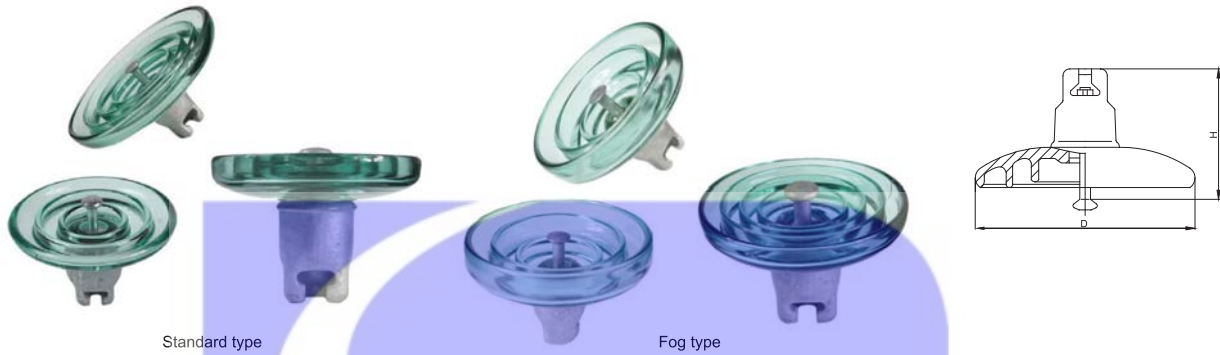
Toughened Glass Suspension Insulators



Cat.No.	IEC model No.	Minimum Mechanical Failing Load (kN)	Disc Diameter D (mm)	Spacing H (mm)	Creepage Distance (mm)	Ball & Socket Coupling	Security Clip	Power Frequency Withstand Voltage Wet 5Pcs/1Pc (kV)	Lightning Impulse Withstand Voltage 5Pcs/1Pc (kV)	Power Frequency Puncture Voltage (kV)	Visual Corona Pin/Cap (kV)	Net Weight (kg)
LXP-40	U40B/110	40	178	110	185	11	W	150/25	380/50	130	18/22	2.1
LXP1-70	U70B/146	70	255	146	320	16	W	150/40	420/100	130	18/22	3.6
LXP2-70	U70B/127	70	255	127	320	16	W	150/40	420/100	130	18/22	3.5
LPX3-70	U70B/140	70	255	140	320	16	W	150/40	420/100	130	18/22	3.6
LXWP4-70	U70BP/146	70	255	146	400	16	W	150/45	440/110	130	18/22	4.7
LXWP5-70	U70BP/146	70	280	146	450	16	W	160/50	440/125	130	18/22	5.5
LXWP6-70	U70BP/146	70	320	146	550	16	W	200/55	520/140	130	18/22	9.2
LXP2-100	U100B/127	100	255	127	320	16	W	150/40	420/100	130	18/22	4.0
LXP-100	U100B/146	100	255	146	320	16	W	150/40	420/100	130	18/22	4.0
LXWP3-100	U100BP/146	100	260	146	450	16	W	160/45	440/110	130	18/22	5.2
LXWP4-100	U100BP/146	100	280	146	450	16	W	160/50	440/125	130	18/22	5.5
LXWP6-100	U100BP/146	100	320	146	550	16	W	200/55	520/140	130	18/22	9.2
LXP-120	U120B/146	120	255	146	320	16	W	150/40	420/100	130	18/22	4.2
LXP2-120	U120B/127	120	255	127	320	16	W	150/40	420/100	130	18/22	4.0
LXWP3-120	U120BP/146	120	260	146	400	16	W	160/45	440/110	130	18/22	5.2
LXWP4-120	U120BP/146	120	280	146	450	16	W	160/50	440/125	130	18/22	5.5
LXWP6-120	U120BP/146	120	320	146	550	16	W	200/55	520/140	130	18/22	8.8
LXP-160	U160B/170	160	280	170	400	20	W	180/50	450/120	130	18/22	6.5
LXP2-160	U160B/170	160	280	170	450	20	W	180/50	450/120	130	18/22	7.1
LXP3-160	U160B/155	160	280	155	400	20	W	180/45	450/120	130	18/22	6.3
LXP4-160	U160B/146	160	280	146	400	20	W	180/45	450/120	130	18/22	6.1

Remark:LXP refers to Standard type and LXWP refers to Fog type.

Toughened Glass Suspension Insulators



GLASS INSULATOR

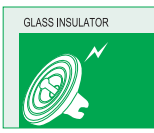
Cat.No.	IEC model No.	Minimum Mechanical Failing Load (kN)	Disc Diameter D (mm)	Spacing H (mm)	Creepage Distance (mm)	Ball & Socket Coupling	Security Clip	Power Frequency Withstand Voltage Wet 5Pcs/1Pc (kV)	Lightning Impulse Withstand Voltage 5Pcs/1Pc (kV)	Power Frequency Puncture Voltage (kV)	Visual Corona Pin/Cap (kV)	Net Weight (kg)
LXWP3-160	U160BP/155	160	280	155	450	20	W	180/50	450/125	130	18/22	7.0
LXWP4-160	U160BP/170	160	280	170	450	20	W	180/50	450/125	130	18/22	7.2
LXWP7-160	U160BP/146	160	320	146	550	20	R	200/55	520/140	130	18/22	8.8
LXWP6-160	U160BP/155	160	320	155	550	20	R	200/55	520/140	130	18/22	9.0
LXWP5-160	U160BP/170	160	320	170	550	20	R	200/55	520/140	130	18/22	9.2
LXP3-210	U210B/170	210	280	170	400	20	R	190/45	510/110	130	18/22	6.9
LXP4-210	U210B/170	210	280	170	450	20	R	190/50	510/125	130	18/22	7.3
LXWP3-210	U210BP/170	210	320	170	550	20	R	200/55	520/140	130	18/22	9.2
LXWP4-210	U210BP/155	210	320	155	550	20	R	200/55	520/140	130	18/22	6.9
LXP-240	U240B/170	240	280	170	400	24	R	190/45	510/110	130	18/22	6.9
LXP1-240	U240B/170	240	280	170	400	20	R	190/45	510/110	130	18/22	6.9
LXP2-240	U240B/170	240	280	170	450	24	R	190/50	510/125	130	18/22	7.2
LXWP3-240	U240BP/170	240	320	170	550	24	R	200/55	520/140	130	18/22	9.2
LXWP4-240	U240BP/170	240	320	170	550	20	R	200/55	520/140	130	18/22	9.3
LXP-300	U300B/195	300	320	195	485	24	R	230/50	520/130	130	18/22	10.6
LXWP-300	U300BP/195	300	340	195	550	24	R	230/55	624/140	130	18/22	12.5
LXWP3-300	U300BP/195	300	340	195	635	24	R	230/60	624/155	130	18/22	14.5
LXWP4-300	U300BP/195	300	390	195	690	24	R	230/60	624/155	130	18/22	15
LXP-420	U420B/205	420	360	205	550	28	R	230/50	535/140	130	18/22	16
LXP-550	U550B/240	550	380	240	600	32	R	230/55	535/140	130	18/22	21.5

Remark:LXP refers to Standard type and LXWP refers to Fog type.

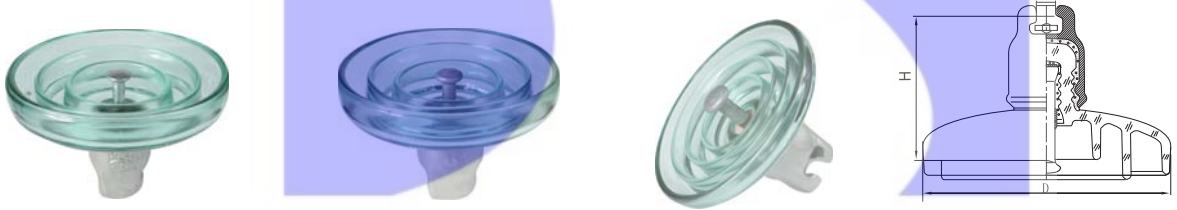
Toughened Glass Insulator Open Air Profile Type



Cat. No.	IEC model No.	Disc Diameter D (mm)	Spacing H (mm)	Creepage Distance (mm)	Connection Size(mm)	Mechanical Failing Load (kN)	Mechanical Routine Test(kN)	Power Frequency Withstand Voltage Wet(kV)	Lighting Impulse Withstand Voltage Dry(kV)	Impulse Puncture Voltage (P.U)	Power Frequency Puncture Voltage(KV)	Radio Influence Voltage(μV)	Corona Visual Test (KV)	Power Frequency Electric Arc Voltage	Net Weight (kg)
LXAP-70	U70BP/146	380	146	365	16	70	35	45	90	2.8	130	50	18/22	0.12s/20KA	5.3
LXAP-100	U100BP/127	380	146	365	16	100	50	45	90	2.8	130	50	18/22	0.12s/20KA	5.2
LXAP-120	U120BP/127	380	146	365	16	120	60	45	90	2.8	130	50	18/22	0.12s/20KA	5.3
LXAP2-120	U120BP/146	380	146	365	16	120	60	45	90	2.8	130	50	18/22	0.12s/20KA	5.4
LXAP-160	U160BP/146	420	146	380	20	160	80	50	95	2.8	130	50	18/22	0.12s/20KA	7.2
LXAP2-160	U160BP/155	420	155	380	20	160	80	50	95	2.8	130	50	18/22	0.12s/20KA	7.2
LXAP-210	U210BP/170	420	170	380	20	210	105	50	95	2.8	130	50	18/22	0.12s/20KA	7.3
LXAP-240	U240BP/170	420	170	380	24	240	120	50	95	2.8	130	50	18/22	0.12s/20KA	7.5
LXAP-300	U300BP/195	440	195	465	24	300	150	55	140	2.8	130	50	18/22	0.12s/20KA	12.6



Toughened Glass Insulator Direct Current (DC) Type



Cat. No.	IEC model No.	Mechanical Failing Load (kN)	Mechanical Routine Test(kN)	Disc Diameter D (mm)	Spacing H (mm)	Creepage Distance(mm)	Connection Size(mm)	Ball & Socket Coupling	(DC)Power Frequency Withstand Voltage Dry/Wet (kV)	Power Frequency Puncture Voltage(kV)	Net Weight(kg)
LXD-160	U160BP/170DC	160	80	324	170	560	20	R	140/55	210	9.6
LXD-210	U210BP/170DC	210	105	324	170	560	20	R	140/55	210	10.5
LXD-240	U240BP/170DC	240	120	324	170	560	24	R	140/55	210	10.4
LXD-300	U300BP/195DC	300	150	340	195	550	24	R	140/55	210	12.5
LXD2-300	U300BP/195DC	300	150	390	195	635	24	R	150/60	225	14.5
LXD3-300	U300BP/195DC	300	150	400	195	690	24	R	170/65	255	15
LXD4-300	U300BP/195DC	300	150	390	195	710	24	R	170/65	255	15.2
LXD-400	U400BP/205DC	400	200	360	205	550	28	R	150/65	225	16
LXD-420	U420BP/205DC	420	210	360	205	550	28	R	150/65	225	16
LXD-530	U530BP/240DC	530	265	380	240	640	32	R	150/65	225	21.5
LXD-550	U550BP/240DC	550	275	380	240	640	32	R	150/65	225	21.5

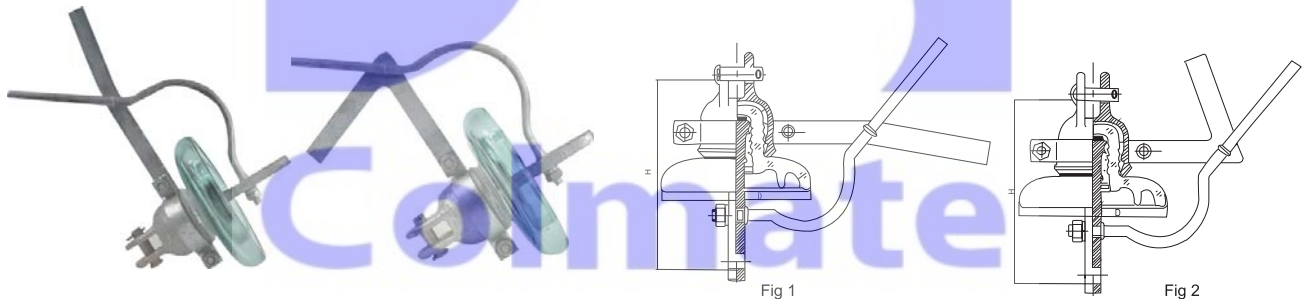
Toughened Glass Insulator Long Creepage Distance Standard Type



GLASS INSULATOR

Cat. No.	IEC model No.	Mechanical Falling Load (kN)	Mechanical Routine Test(kN)	Disc Diameter D (mm)	Spacing H (mm)	Creepage Distance (mm)	Connection Size (mm)	Power Frequency Withstand Voltage Wet(kV)	lightning Impulse Withstand Voltage Dry (kV)	Impluse Puncture Voltage (P.U)	Power Frequency Puncture Voltage (kV)	Radio Influence Voltage (μv)	Corona Visual Test (kV)	Power Frequency Electric Arc Voltage	Net Weight (kg)
LXPL-70	U70B/146	70	35	320	146	490	16	40	100	2.8	130	50	18/22	0.12s/20KA	5.9
LXPL-100	U100B/146	100	50	320	146	490	16	40	100	2.8	130	50	18/22	0.12s/20KA	5.9
LXPL-120	U120B/146	120	60	320	146	490	16	40	100	2.8	130	50	18/22	0.12s/20KA	5.9
LXPL-160	U160B/155	160	80	360	155	550	20	45	110	2.8	-	50	18/22	0.12s/20KA	10.1
LXPL-210	U210B/170	210	105	360	170	550	20	45	110	2.8	-	50	18/22	0.12s/20KA	10.1
LXPL-240	U240B/170	240	120	360	170	550	20	45	110	2.8	-	50	18/22	0.12s/20KA	10.2

Toughened Glass Cap & Pin Insulator Earthing Type



Cat. No.	IEC model No.	Fig. No	Mechanical Falling Load (kN)	Disc Diameter D (mm)	Spacing H (mm)	Creepage Distance (mm)	Power Frequency Puncture Voltage (kV)	Power Frequency Puncture Voltage (kV)	Extinguished Inductance Current at Power Frequency Refresh Voltage 2500V, with Gap Distance 15mm (kA)	Extinguished Capacity Current at Power Frequency Refresh Voltage 2500V, with Gap Distance 15mm(kA)	Electrode Performance of Withstand Arc Current/ Power Frequency Current(kA)	Electrode Performance of Withstand Arc Current/ Power Time(S)	Electrode Performance of Withstand Arc Current (times)	Net Weight (kg)
LXPE-70A	U70C/200	1	70	200	210	220	130	8	35	20	10	0.2	2	4.5
LXPE-70B	U70CN/200	2	70	200	210	220	130	8	35	20	10	0.2	2	4.5
LXPE-100A	U100C/200	1	100	200	210	220	130	8	35	20	10	0.2	2	4.5
LXPE-100B	U100CN/200	2	100	200	210	220	130	8	35	20	10	0.2	2	4.5